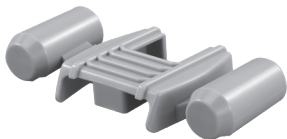


nickelodeon



Instruction Manual

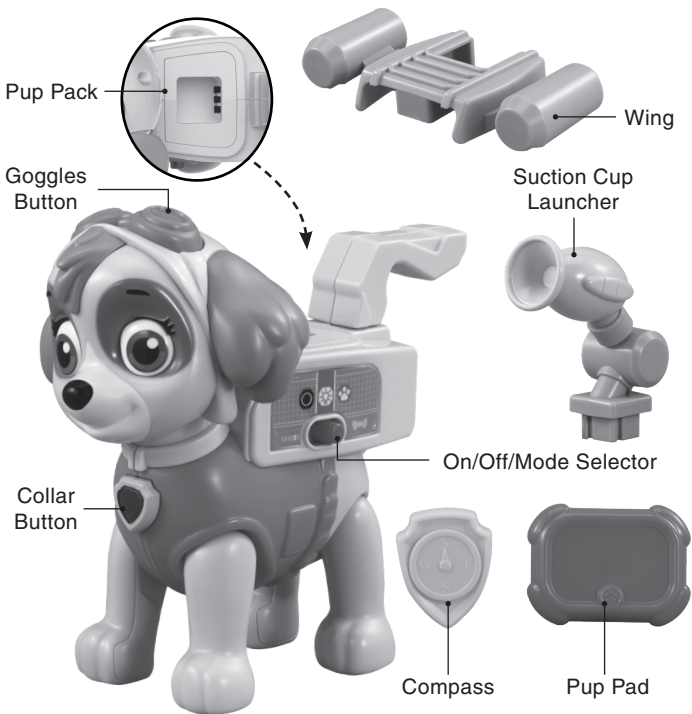
Skye to the Rescue



© 2023 Spin Master PAW Productions Inc. All Rights Reserved. PAW Patrol and all related titles, logos and characters are trademarks of Spin Master Ltd. Nickelodeon and all related titles and logos are trademarks of Viacom International Inc.

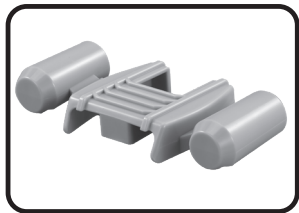
INTRODUCTION

Thank you for purchasing the **Skye to the Rescue** toy. Go on missions to help Chickaletta, grab things in hard-to-reach places and more with your favorite pup! Use the Pup Pad, suction cup launcher, wing and compass to help save the day.



INCLUDED IN THE PACKAGE

- Skye to the Rescue



Wing



Suction Cup
Launcher



Compass



Pup Pad

- Quick Start Guide

WARNING

All packing materials such as tape, plastic sheets, packaging locks, removable tags, cable ties, cords and packaging screws are not part of this toy, and should be discarded for your child's safety.

NOTE

Please save this Instruction Manual as it contains important information.

ATTENTION :

Pour la sécurité de votre enfant, débarrassez-vous de tous les produits d'emballage tels que rubans adhésifs, feuilles de plastique, attaches, étiquettes, cordons et vis d'emballage. Ils ne font pas partie du jouet.

NOTE

Il est conseillé de sauvegarder ce manuel d'instructions car il comporte des informations importantes.



WARNING:

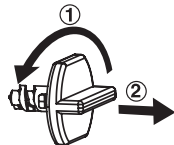
CHOKING HAZARD—Small parts.
Not for children under 3 yrs.



AVERTISSEMENT:

RISQUE DE SUFFOCATION—Petites pièces. Ne convient pas aux enfants de moins de 3 ans.

Unlock the Packaging Locks



- ① Turn the packaging locks counterclockwise several times.
- ② Pull out the packaging locks and discard.

GETTING STARTED

Slide the **On/Off/Mode** Selector to start playing.

Before playing for the first time, please insert 2 new “AAA” sized alkaline batteries. (The “AAA” sized batteries included in the unit are for demo purposes only and are not long life batteries.)



WARNING:

Adult assembly required for battery installation.
Keep batteries out of reach of children.

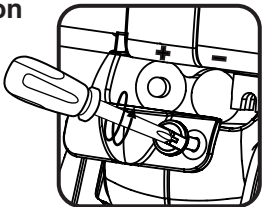


ATTENTION :

Les piles ou accumulateurs doivent être installés par un adulte.
Tenir les piles ou accumulateurs hors de portée des enfants.

Battery Removal and Installation

1. Make sure the unit is turned **Off**.
2. Find the battery cover located on the back of the unit, use a screwdriver to loosen the screw, and then open the battery cover.
3. Remove old batteries by pulling up on one end of each battery.
4. Install 2 new AAA (AM-4/LR03) batteries following the diagram inside the battery box. (For best performance, alkaline batteries or fully charged Ni-MH rechargeable batteries are recommended).
5. Replace the battery cover and tighten the screw to secure.



IMPORTANT: BATTERY INFORMATION

- Insert batteries with the correct polarity (+ and -).
- Do not mix old and new batteries.
- Do not mix alkaline, standard (carbon-zinc) or rechargeable batteries.
- Only batteries of the same or equivalent type as recommended are to be used.
- Do not short-circuit the supply terminals.
- Remove batteries during long periods of non-use.
- Remove exhausted batteries from the toy.
- Dispose of batteries safely. Do not dispose of batteries in fire.

RECHARGEABLE BATTERIES

- Remove rechargeable batteries (if removable) from toy before charging.
- Rechargeable batteries are only to be charged under adult supervision.
- Do not charge non-rechargeable batteries.

IMPORTANT : INFORMATIONS CONCERNANT LES PILES

Les piles fournies avec le produit permettent de tester le jouet en magasin mais ne sont pas des piles longue durée.





- Mettre en place les piles ou les accumulateurs en respectant les polarités + et -.
- Ne pas mélanger des piles ou des accumulateurs neufs avec des usagés.
- Ne pas mélanger différents types de piles : alcalines, zinc-carbone et rechargeables.
- Seules des piles du type recommandé doivent être utilisées.
- Ne pas mettre les bornes d'une pile ou d'un accumulateur en court-circuit (en reliant directement le + et le -).
- Retirer les piles ou les accumulateurs en cas de non-utilisation prolongée.
- Enlever les piles ou les accumulateurs usagés du jouet.
- Ne les jeter ni au feu ni dans la nature.

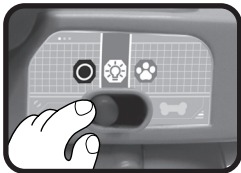
PILES RECHARGEABLES :

- Enlever, lorsque c'est possible, les accumulateurs du jouet pour les recharger.
- Les accumulateurs ne doivent être chargés que sous la surveillance d'un adulte.
- Ne pas tenter de recharger des piles non rechargeables.

PRODUCT FEATURES

1. On/Off/Mode Selector

Slide the **On/Off/Mode Selector** to a mode position to turn the unit **ON**. Choose from Mission mode [] or Learning mode [] by sliding the selector. To turn the unit **OFF** [], slide the switch to **OFF** [].



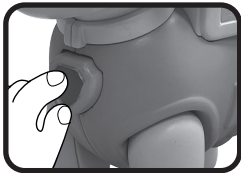
2. Goggles Button

In Learning mode, press the **Goggles Button** and hear Skye tell you about herself, her favorite things and catchphrases. In Mission mode, press the **Goggles Button** to start a question and answer game.



3. Collar Button

In Learning mode, press the **Collar Button** to hear Skye share her daily life with you. In Mission mode, press the **Collar Button** to start a mission and choose the right tool for the job.



4. Rescue Tools

Place the **Wing**, **Suction Cup Launcher**, **Pup Pad** and **Compass** in Skye's **Pup Pack** to hear her describe each tool and how it works.



5. Automatic Shut-Off

To preserve battery life, the unit will automatically shut off after several minutes without input. The unit can be turned on again by pressing any button or sliding the mode selector.

NOTE

If the unit powers down or if the light fades out during play, please install a new set of batteries.

ACTIVITIES

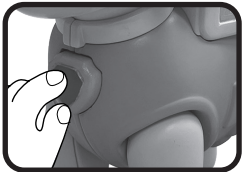
1. Learning Mode

Learn about Skye and her daily life. Skye tells you about her favorite things, her catchphrases, her tools and her missions. You can place the rescue tools in Skye's **Pup Pack** and learn how to finish the mission with the right tool.



2. Mission Mode

Go on a mission to finish Skye's training or receive Ryder's call from the **Pup Pad** and help save the day. Press the **Goggles Button** and Skye will ask you questions, and you can tell her the right answer. Press the **Collar Button** to start a rescue mission and choose the right tool for the job.



CARE & MAINTENANCE

1. Keep the unit clean by wiping it with a slightly damp cloth.
2. Keep the unit out of direct sunlight and away from any direct heat sources.
3. Remove the batteries if the unit will not be in use for an extended period of time.
4. Do not drop the unit on hard surfaces and do not expose the unit to moisture or water.

TROUBLESHOOTING

If for some reason the unit stops working or malfunctions, please follow these steps:

1. Turn the unit **Off**.
2. Interrupt the power supply by removing the batteries.
3. Let the unit stand for a few minutes, then replace the batteries.
4. Turn the unit **On**. The unit should now be ready to use again.
5. If the unit still does not work, install a new set of batteries.

IMPORTANT NOTE:

If the problem persists, please call our **Consumer Services Department** at **1-800-521-2010** in the U.S., **1-877-352-8697** in Canada, or by going to our website **vtechkids.com** and filling out our **Contact Us** form located under the **Customer Support** link. Creating and developing VTech products is accompanied by a responsibility that we take very seriously. We make every effort to ensure the accuracy of the information, which forms the value of our products. However, errors sometimes can occur. It is important for you to know that we stand behind our products and encourage you to contact us with any problems and/or suggestions you might have. A service representative will be happy to help you.

NOTE

This equipment has been tested and found to comply with the limits for a Class B digital device, pursuant to Part 15 of the FCC Rules. These limits are designed to provide reasonable protection against harmful interference in a residential installation. This equipment generates, uses and can radiate radio frequency energy and, if not installed and used in accordance with the instructions, may cause harmful interference to radio communications. However, there is no guarantee that interference will not occur in a particular installation. If this equipment does cause harmful interference to radio or television reception, which can be determined by turning the equipment off and on, the user is encouraged to try to correct the interference by one or more of the following measures:

- Reorient or relocate the receiving antenna.
- Increase the separation between the equipment and receiver.
- Connect the equipment into an outlet on a circuit different from that to which the receiver is connected.
- Consult the dealer or an experienced radio/TV technician for help.

Caution: Changes or modifications not expressly approved by the party responsible for compliance could void the user's authority to operate the equipment.

Supplier's Declaration of Conformity

47 CFR § 2.1077 Compliance Information

Trade Name: VTech®
Model: 5632
Product Name: PAW Patrol Skye to the Rescue
Responsible Party: VTech Electronics North America, L.L.C.
Address: 1156 W. Shure Drive, Suite 200
Arlington Heights, IL 60004
Website: vtechkids.com

THIS DEVICE COMPLIES WITH PART 15 OF THE FCC RULES. OPERATION IS SUBJECT TO THE FOLLOWING TWO CONDITIONS: (1) THIS DEVICE MAY NOT CAUSE HARMFUL INTERFERENCE, AND (2) THIS DEVICE MUST ACCEPT ANY INTERFERENCE RECEIVED, INCLUDING INTERFERENCE THAT MAY CAUSE UNDESIRED OPERATION.

CAN ICES-003(B)/NMB-003(B)

CONSUMER SERVICES

Creating and developing **VTech®** products is accompanied by a responsibility that we at **VTech®** take very seriously. We make every effort to ensure the accuracy of the information, which forms the value of our products. However, errors sometimes can occur. It is important for you to know that we stand behind our products and encourage you to call our Consumer Services Department with any problems and/or suggestions that you might have. A service representative will be happy to help you.

Australian Customers:

Phone: 1800 862 155

Website: support.vtech.com.au

NZ Customers:

Phone: 0800 400 785

Website: support.vtech.com.au

PRODUCT WARRANTY/ CONSUMER GUARANTEES

Australian Customers:

VTECH ELECTRONICS (AUSTRALIA) PTY LIMITED –
CONSUMER GUARANTEES

Under the Australian Consumer Law, a number of consumer guarantees apply to goods and services supplied by VTech Electronics (Australia) Pty Limited. Please refer to vtech.com.au/consumerguarantees for further information.

**Visit our website for more
information about our products,
downloads, resources and more.**

vtechkids.com
vtechkids.ca
www.vtech.com.au

*Read our complete warranty policy online at
vtechkids.com/warranty
vtechkids.ca/warranty*

